

BUILT ON
YOUNG. MUSIC. EMOTION



GUANGZHOU YME TECHNOLOGIES CO., LTD

ADD.: 6 Qiheng Road Chenchong Village Shawan Town, Panyu District, Guangzhou, China

TEL.: +86 20 34838008

FAX: +86 20 34831010

WEBSITE: www.YMESYSTEMS.com

EMAIL: info@YMESYSTEMS.com



Index

Our Story	01
R&D Technologies	02
Manufacturing Facilities	04
Amplifier Module Technologies	06
YOGA Line Array Systems	08
Versa Multipurpose Satellite Systems	26
HSA Amplifiers	37
D Processors	39

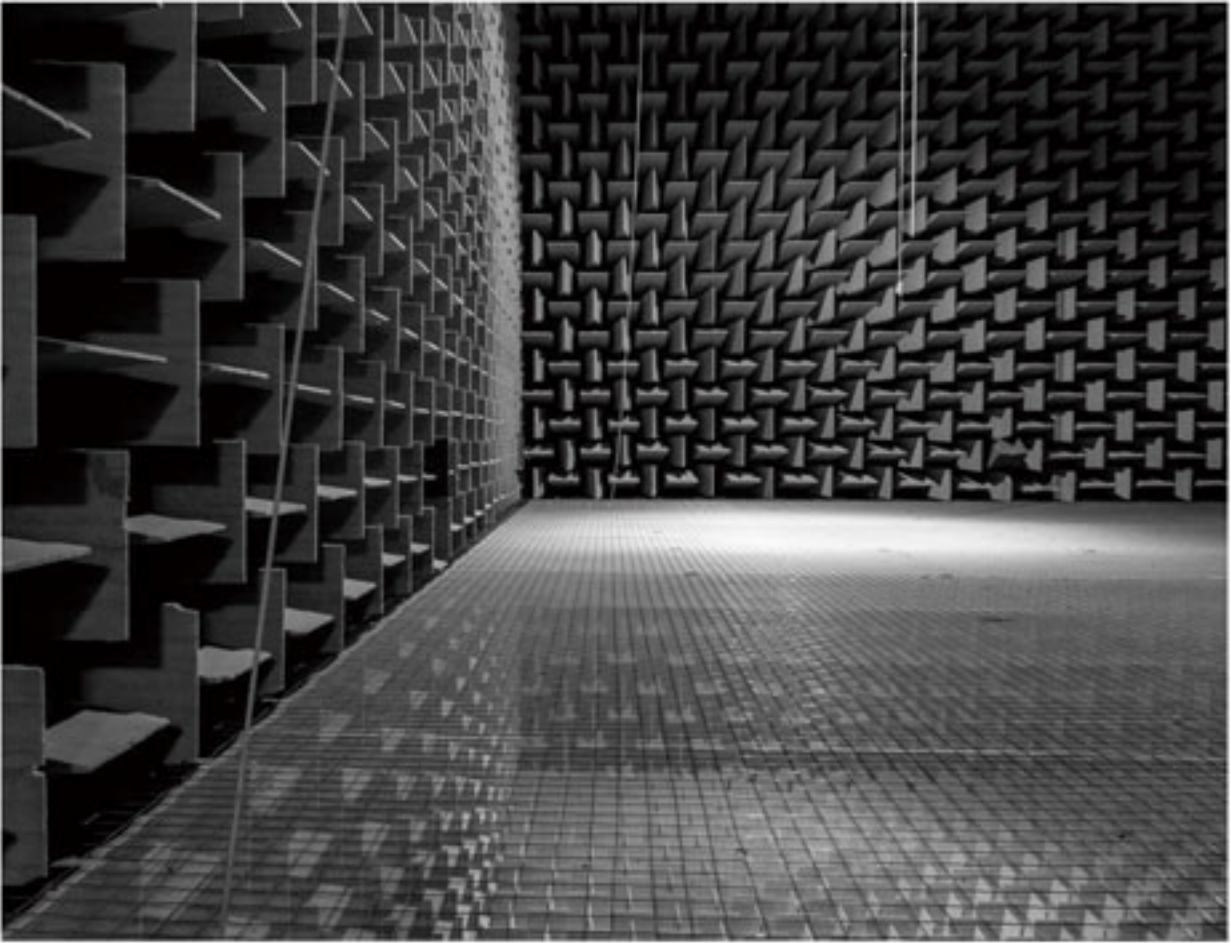
Our Story

There were a group of young man who were obsessed by electronics and acoustics since they were children. They practised their passion as sound system designers and engineers in thousands of live shows featuring renowned bands and singers. They designed systems and used most renowned audio systems in the world day after day. They studied electronic and acoustic engineering eagerly and thoroughly. After years of experience they understood the relationships between frequency response, phase, impedance, directivity, drivers, crossovers, amplifiers, transmission, pre-amp and levels, positioning and distance of sound, and even the secrets of how sound connects with emotion.

By 2013, this group of young people had become a backbone in the industry. They had an idea: to develop and manufacture sound systems that meet the highest standard and fit market demands by using their knowledge and understanding of applications and technologies. It was an exciting moment! And so **YMESYSTEMS** were born that same year, with the genes of **YOUNG, MUSIC, EMOTION**.

YMESYSTEMS launched their first active and passive line array: YOGA, and it was a great success. Based on years of live show experience and the latest electronic technologies, YOGA features true analogue circuits and a class D 3-channel high power amplifier to drive two passive subwoofers and four passive single 10” bi-amp top speakers. Combined with weather-resistant paint and a patented transportation method, YOGA is well respected by audio professionals in the sound industry.

YMESYSTEMS have a complete product range, with systems for live sound, fixed installation, portable application and corporate events. All our products have the advantage of innovative technology, practical, rational and elegant design, first-class quality, and of course competitive pricing. Today **YMESYSTEMS’** products are popular across the world: in Asia, Europe, America and Africa.





R&D Technologies

Inspired by numerous live show experiences, **YME**SYSTEMS design our products after long discussions and cooperations with rental companies, resellers, sound engineers and musicians, and utilising the latest advances in audio electronics. This process has realized **YME**SYSTEMS' core concept as being "sense & simplicity". This means our products and accessories can meet the most demanding requirements in sound, power, stability and measurability, whilst being portable, easy-to-use, and conveniently sized.

YMESYSTEMS believe that good sound products are a combination of science and art. Our experienced R&D and manufacturing team always utilise the most advanced hardware and software to improve the design and quality of the products:

- 1.PROE;
- 2.CLIO, MLSSA, LEAP, LMS;
- 3.SIA SMAARTLIVE;
- 4.Frequency Sweeping Signal Generator;
- 5.Capacitive Magnetizing Apparatus;
- 6.Driver Power Testing;
- 7.Transistors Detector;
- 8.Anechoic Chamber;
- 9.SOLIDWORK;
- 10.AUDIO PRECISION;
- 11.Tesion Testing Machine;
- 12.CNC;
- 13.Polyurethane Coating Machine;
- 14.Laser Engraving Machine;
- 15.Sinusoidal Vibration Tester;
- 16.High and Low Temperature Tester



Manufacturing Facilities

YMESYSTEMS approaches world class standard by selecting high-quality components, using cutting-edge technologies and running strict tests. We focus on the quality and stability of our products and aim to provide turnkey systems to our customers. **YME**SYSTEMS pays close attention to the smallest detail—every cable, every connector, every piece of rigging, trying to provide a refined and perfect solution in every way.

From speaker drivers to cabinets, from amplifiers to processors, **YME**SYSTEMS only use the most advanced engineering to make sure every product meets the requirements of the most professional and demanding applications;

1. Our advanced specialist facilities are used for producing and coating cabinets to ensure the accuracy of cutting and spraying;
2. Hardware and components are all assembled by precision laser welding;
3. Drivers are assembled by a combination of hand-build and intelligent assembly lines. We also use CLIO 11 FW Acoustical Measurement System to guarantee the consistency of the drivers' frequency response;
4. Strict overall testing before shipping;
5. All rigging components have passed rigorous safety load testing.



Class D Amplifier Module with Analog Circuit Technology

Huge Switching Power Supply

Amplifier Module Technologies

It is developed with years of study and research. Every modular needs to go through extreme tests including full loading vibration test 24 hours, high and low temperature tests as well as 100% quality check for all its components, which fully prepares the system for the exciting moment when **YMESYSTEMS** sounds.

Benefiting from the exceptional analog circuit and D class switching power technologies, the active **YMESYSTEMS**' products are well-recognized for high quality and reliability.

Without side-effects of regular DSP modules usually have such as crash, distortion and complicated operations, the crossover, limiter and EQ are executed by analog circuitry. The exceptional technology helps **YMESYSTEMS**' amplifier module to deliver high fidelity sound with inherent stability.

The comprehensive protections such as as thermo protection at 75 degree celsius, power surge protection, DC protection and overcurrent protection certainly create a good foundation of reliable amplification system. The cooling system is facilitated by isolating heat-sinking object and audio circuit completely, which helps the amplifier module operate stably and continuously under hard condition of high temperature.

To push performance limit of active systems, we started to develop amplifier module and speaker cabinet together at the same time, tailor the design of all of these elements to optimize their interactions for the best performance.

YMESYSTEMS' amplifier module has great flexibility to transform to larger or smaller format. It has been utilized successfully for below series:

2 X 2500W@4Ω + 1 X 1000W@4Ω, for YOGA E/YOGA X Active;
 2 X 2500W@4Ω, for YOGA SUB Active;
 2 X 1000W@4Ω + 1 X 2500W@4Ω, for VERSA Satellite Active;
 2 X 1000W@4Ω, for VERSA Full Range Active;
 2 X 600W@4Ω + 1 X 1000W@4Ω, for RABBIT Satellite Active.

The active products of **YMESYSTEMS** are equipped with unique advantages in terms of application such as: No extra amplifier racks, minimum loudspeaker cables, no calibration, fast setup and tear-down, efficient truck packs.



YOGA Transportation Lid X 1
Speaker Pole with Screw Threads, Length: 380mm X 1
Speaker Pole with Screw Threads, Length: 580mm X 1
4 Pin Speaker Cable, 0.5 Meter with 2 x Neutrik NL4 Connectors X 1
4 Pin Speaker Cable, 2 Meters with 2 x Neutrik NL4 Connectors X 1
1 Meter Neutrik Powercon X 1

Single 10" Line Array Speaker X 2

Single 18" or Dual 15" Bass Speaker X 1

Spectacular Sense and Simplicity with Patented Transportation Design (Patent No.:ZL 2015 2 0796950.X)

Two tops are stacked onto bass speaker and shackled by speaker's rigging hardware itself, standing poles and cables are hidden in the lid intelligently. Together with tailored protection coat, our patented design provides YOGA systems an easy transporting solution with tremendous convenience and strong protection.



Incredibly Extendable. To Be Small or Big? It Is Not A Question.

The true modular design provides YOGA series amazing flexibilities to be combined, split and extended freely from 300 people to 8000 people scaled application, from the simplest 2+1 mono to 4 way large system.

The FOH engineers' imagination at application can be achieved by easy combination in different ways, which is just as simple as a building block game.



Various Combinations & Choices

Adapting to different preferences and scale of applications. YOGA series offers various choices such as the economical YOGA E, the high performance YOGA X, the plug-play YOGA active and tunable YOGA passive. YOGA is always herewith a proper solution that meets your need.



Professional & Presettable Rigging System



YG 65

The **YG 65** is a single 10" two way bi-amp passive line array speaker specially designed to small-medium live touring performance which needs crucial sound quality. YG 65 is a true line array speaker which designed by meeting all criteria of Wave front Sculpture Technology (WST)—A true line array should be guided strictly by physics principle of WST.

YG 65 utilizes a high quality neodymium 1.4" horn throat compression tweeter with 65 mm (2.6") voice coil and a 10" high output neodymium mid-low driver with 75mm voice coil and humidity resistant paper cone, coupled with an optimized waveguide (10° vertical and 90° horizontal dispersion). YG 65 ensures extraordinary performance with penetration and smoothness.

Ultra compact and solid enclosure made from 15mm or 18mm high quality plywood and finished with durable water paint for touring use. The 2 nylon strips offer protection to the bottom of the enclosure from scratches. Together with the slot which designed on the top of enclosure, the nylon strips also facilitate installation of one enclosure to another much easier.

YG 65 can be either flown, ground stacked or pole-mounted on bass speakers (YG 18/A) as main PA or ground stacked with subwoofer (YG SUB/YG SUBA) for front fill use. The integrated rigging system benefits from 3-point loading design. It's precisely made and highly safe with durable magnetic PIN. The rigging system offers angle adjustment from 0 to 10° with 2° step.



YG 18

YG 18 is a single 18" passive bass speaker specially designed to small-medium live touring performance which needs crucial sound quality.

YG 18 is a flying bass that utilizes high performance single 18" ferrite driver (100mm voice coil and a humidity resistant paper cone), lowering the range down to 45Hz (± 3 dB) and delivering output with high efficiency, great range and excellent dynamics. Its compact size and integrated rigging make it extremely well suited for flown, ground stacked or pole-mounted with YG 65 line array speaker.

Ultra compact and solid enclosure made from 18mm high quality plywood and finished with durable water paint. The enclosure is well-protected by multi nylon strips from left to right and from back to the bottom. It is perfect for tough conditions of touring performance. Further more, the 4 lockable wheel design offers easy movement.

Due to the universal enclosure design, passive YG 18 can be converted to active YG 18A by simply installing the amplifier module.



YG 18A

YG 18A is the active version of YG 18.

Thanks to the highly powerful multi-channels D class switching power amplifier module (1 X 1000W@4 Ω + 2 X 2500W@4 Ω), one active YG 18A can drive maximum 4 pieces passive YG 65 line array speakers. The amplifier module is developed by exceptional analog circuit technology which is without unwanted DSP treatment. It delivers widely open and crystal clear sound. The built-in analog crossover and limiter make the system well-protected and truly plug and play.



YG 75

The **YG 75** is a 10" two-way bi-amp passive line array speaker specially designed to small-medium live touring performance which needs crucial sound quality. YG 75 is a real line array speaker which designed by meeting all criteria of Wave front Sculpture Technology (WST).

YG 75 utilizes a high quality neodymium 1.4" horn throat compression tweeter with 75 mm (3") voice coil and a 10" high output neodymium mid-low driver with 75mm voice coil and humidity resistant paper cone, coupled with an optimized waveguide (10° vertical and 90° horizontal dispersion). YG 75 provides extraordinary performance with penetration and smoothness.

Ultra compact and solid enclosure made from 15mm or 18mm high quality birch plywood and finished with superb polyurea paint which features anti-scratch and waterproof. The 2 nylon strips offer protection to the bottom of the enclosure from scratches. Together with the slot which designed on the top of enclosure, the nylon strips also facilitate installation of one enclosure to another much easier.

YG 75 Can be either flown, ground stacked or pole-mounted on bass speakers (YG 30/A) as main PA or ground stacked with subwoofer (YG SUB/A) for front fill use. The integrated rigging system benefits from 3-point loading design, precision-made and highly safe rigging hardware and durable magnetic PIN. The rigging systems offers angle adjustment from 0 to 10° with 2° step.



YG 30

YG 30 is a 2 X 15" passive bass speaker specially designed to small-medium live touring performance which needs crucial sound quality.

YG 30 is a flying bass that utilizes high performance dual 15" neodymium driver (75mm voice coil and a humidity resistant paper cone), lowering the range down to 45Hz (± 3dB) and delivering output with high efficiency, great range, deep frequency and excellent dynamics. Its compact size and integrated rigging make it a perfect suit for flown, ground stacked or pole-mounted with YG 75 line array speaker.

Ultra compact and solid enclosure made from 18mm high quality birch plywood and finished with superb polyurea paint which features anti-scratch and waterproof. The enclosure is well-protected by multi nylon strips from left to right and from the back to the bottom side. It's perfectly suitable for tough conditions of touring performance. Furthermore, the 4 lockable wheels design offers easy movement.

Due to the universal enclosure design, passive YG 30 can be converted to active YG 30A by simply installing the amplifier module.



YG 30A

YG 30A is the active version of YG 30.

Thanks to the highly powerful multi-channels D class switching power amplifier module (1 X 1000W@4Ω + 2 X 2500W@4Ω), one active YG 30A can drive maximum 4 pieces passive YG 75 line array speakers. The amplifier module is developed by exceptional analog circuit technology which is without unwanted DSP treatment. It delivers widely open and crystal clear sound. The built-in analog crossover and limiter make the system well-protected and truly plug and play.



YG SUB

YG SUB is 2 X 18" passive subwoofer specially designed to work with passive YOGA X or YOGA E system for those applications which need massive and extended low frequency reproduction.

YG SUB utilizes high performance dual 18" ferrite driver (100mm voice coil and a humidity resistant paper cone) that can lower the range down to 30Hz (± 3 dB) and deliver an output of high efficiency, great range, deep frequency and excellent dynamics. Its super slim enclosure can be perfectly ground stacked upright or crosswise with bass speakers (YG 18 or YG 30) as main PA as well as with line array speakers (YG 65 or YG 75) as front fill system.

The 2 nylon strips offer protection to the bottom of the enclosure from scratches. Together with the slot which designed on the top of enclosure, the nylon strips also facilitate installation of one enclosure to another much easier. Ultra solid enclosure made from 18mm high quality birch plywood and finished with superb polyurea paint which features anti-scratch and waterproof.

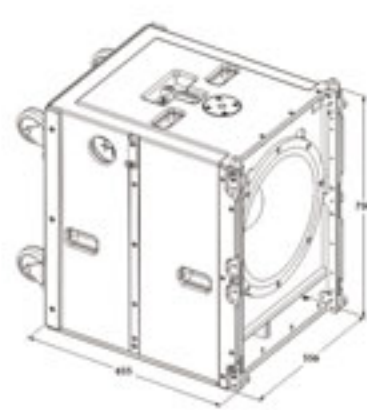
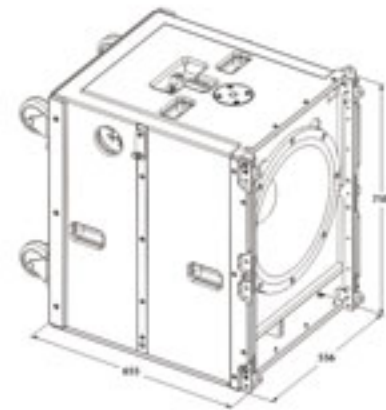
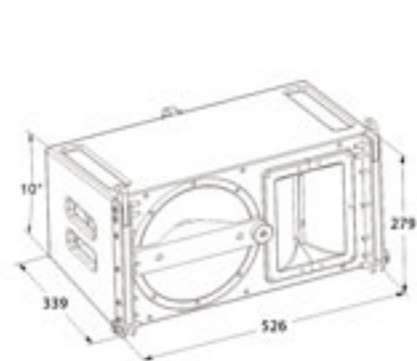
Due to the universal enclosure design, passive YG SUB can be converted to active YG SUBA by simply installing the amplifier module.



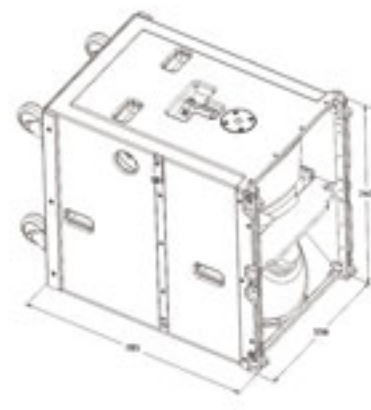
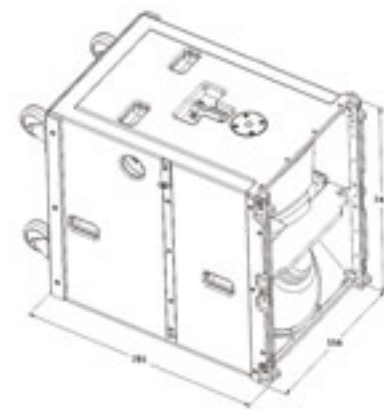
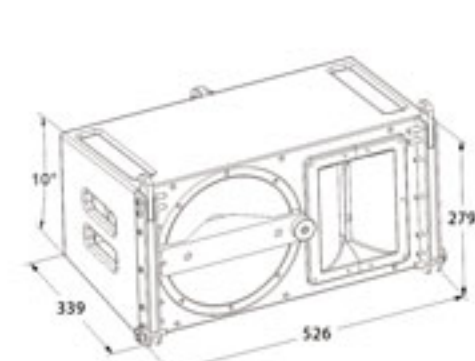
YG SUBA

YG SUBA is the active version of YG SUB.

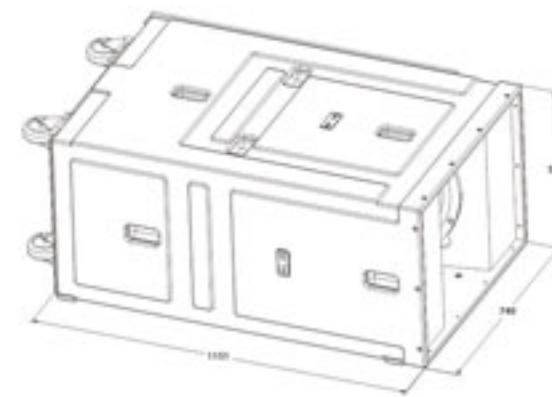
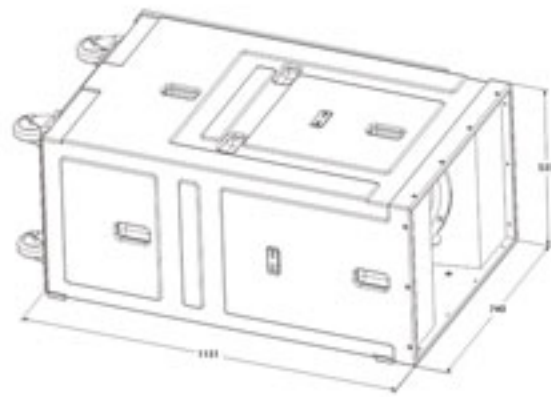
YG SUBA is driven by a highly powerful multi-channels D class switching power amplifier module (2 X 2500W@4 Ω). The amplifier module is developed by exceptional analog circuit technology which is without unwanted DSP treatment. It delivers powerful and dynamic extra low frequency output. The built-in analog limiter make the system well-protected and truly plug and play.



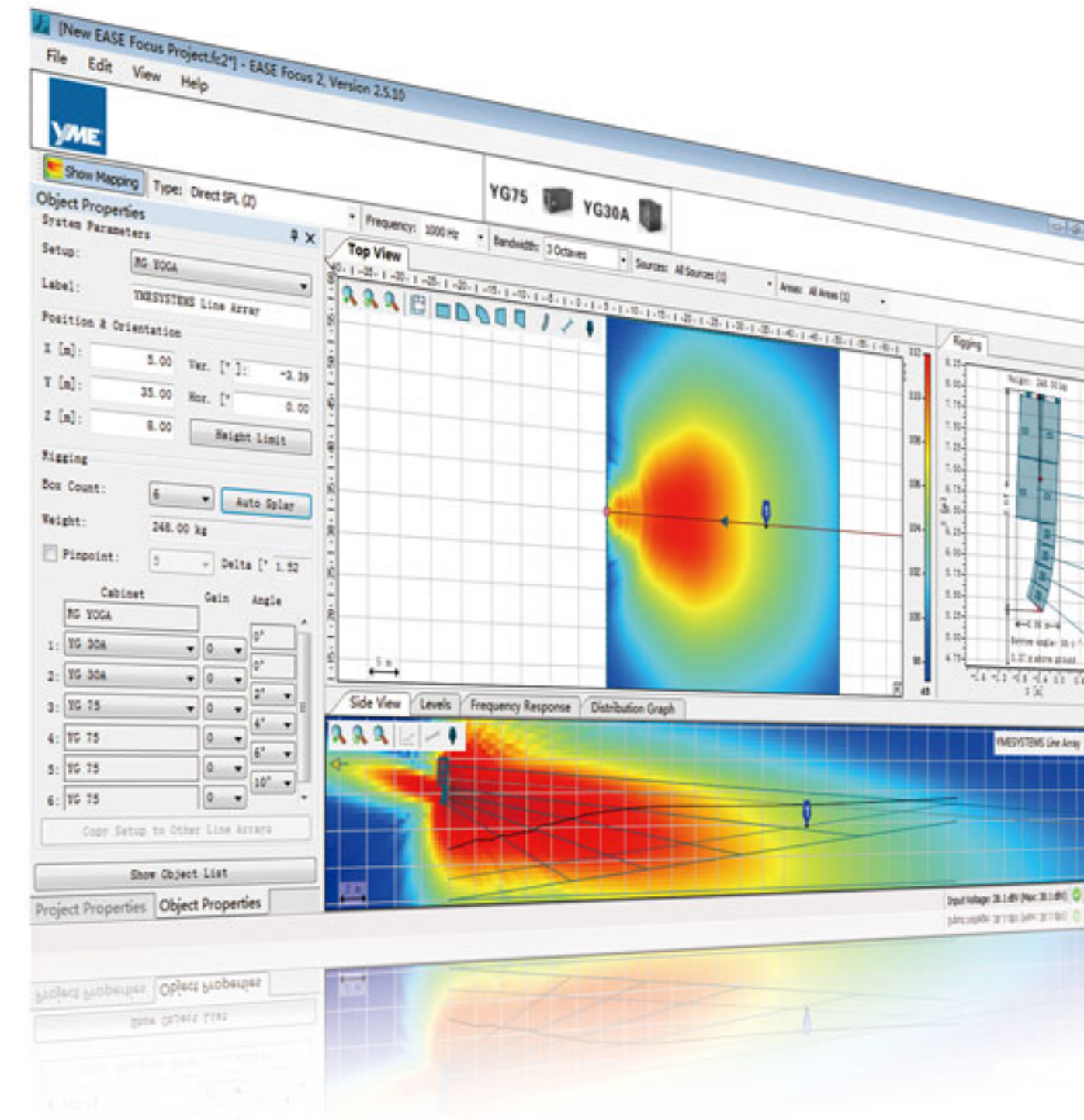
Model No.	YG 65	YG 18	YG 18A		
Frequency Response	90 Hz ~ 18KHz (±3dB) , 80 Hz ~ 20KHz (-10dB)	45 Hz ~ 100Hz (+3 dB) , 35 Hz ~ 150Hz (-10dB)	45Hz ~ 100Hz (±3dB) , 35Hz ~ 150Hz (-10dB)		
Sensitivity (@1w / 1m)	HF:110 dB, LF:103 dB	98dB	98dB		
Nominal Coverage Angle	90° (H) , Vertically Adjustable Maximum 10°				
Power Rating (AES)	HF:80W, LF:350W	800W	800W		
Nominal Impedance	HF:16 Ω , LF:16 Ω	8 Ω			
Maximum SPL	HF:129dB SPL, 135dB SPL Peak, LF:128 dB SPL, 134dB SPL Peak	LF:127dB SPL, 133dB SPL Peak	LF:127dB SPL, 133dB SPL Peak		
Drivers	1x2.6" (1.4" exit) Neodymium. (65mm Coil.) ,1x10" (65mm Coil.) Neodymium	1x18" (100mm Voice Coil) Ferrite	1x18" (100mm Voice Coil) Ferrite		
Dimensions (H x W x D)	279 × 526 × 339(mm)	750 × 556 × 655(mm)	750 × 556 × 655(mm)		
Net Weight	20kg	70kg	79kg		
Connection	Neutrik NL4 x 2	Neutrik NL4 x 2	XLR+POWERCON+SPEAKON		
Connection Method	LF:1+1- ,HF:2+2-	LF:1+1-			
Riggings	3 Fly Points + Pole Mounts	4 Fly Points + Pole Mounts	4 Fly points + Pole Mounts		
Enclosure	15mm, 18mm Multilayer Plywood	15mm, 18mm, 24m Multilayer Birch Plywood	15mm, 18mm, 24mm Multilayer Birch Plywood		
Finish	Black Water-based Paint	Black Water-based Paint	Black Water-based Paint		
Grille	Black Steel Mesh + Acoustic Transparent Cloth	Black Steel Mesh + Acoustic Transparent Cloth	Black Steel Mesh + Acoustic Transparent Cloth		
3 Channels Class Amp Module@4 Ω	-	-	HF channel	LF channel	SUB channel
	-	-	1000W	2500W	2500W
THD (1Khz, Full Power 4 Ω)	-	-	≦ 1%		
SNR	-	-	102.5dB	103dB	103dB
Active Gain (1KHz, 8 Ω)	-	-	20dB	32dB	32dB
Input	-	-	Neutrik & Male XLR & Female XLR		
Input Impedance	-	-	20K Ω Balanced / 10K Ω Unbalanced		
Input Connection (Full-Range)	-	-	Neutrik NL4MP (LF:1+1- , HF:2+2-)		
Input Connection (Sub)	-	-	Neutrik NL4MP (BASS:1+1-)		
Output Circuit Type	-	-	Class D		
Cooling System	-	-	The airflow direction is from the back to the front		
Voltage Requirements	-	-	200-240V ~ 50-60Hz		



Model No.	YG 75	YG 30	YG 30 A		
Frequency Response	90 Hz ~ 18KHz (±3dB) , 80 Hz ~ 20KHz (-10dB)	45Hz~100Hz (±3dB) , 35Hz~150Hz (-10dB)	45Hz~100Hz (±3dB) , 35Hz~150Hz (-10dB)		
Sensitivity (@1w / 1m)	HF:112 dB, LF:103 dB	99dB	99dB		
Nominal Coverage Angle	90° (H) , Vertically adjustable maximum10°				
Power Rating (AES)	HF:80W, LF:350W	1000W	1000W		
Nominal Impedance	HF:16 Ω , LF:16 Ω	8 Ω			
Maximum SPL	HF:131dB SPL, 137dB SPL peak LF:128 dB SPL, 134dB SPL peak	LF:129dB SPL, 135dB SPL peak	LF:129dB SPL, 135dB SPL Peak		
Drivers	1x3" (1.4" exit) Neodymium. (75mm Coil.) ,1x10" (65mm Coil.) Neodymium	2x15" (100mm Voice Coil) Neodymium.	2x15" (100mm Voice Coil) Neodymium.		
Dimensions (H x W x D)	279 × 526 × 339(mm)	747x556x785 (mm)	747x556x785 (mm)		
Net Weight	20kg	62kg	71kg		
Connection	Neutrik NL4 x 2	Neutrik NL4 x 2	XLR+POWERCON+SPEAKON		
Connection Method	LF:1+1- ,HF:2+2-	LF:1+1-			
Riggings	3 Fly Points + Pole Mounts	4 Fly Points + Pole Mounts	4 Fly Points + Pole Mounts		
Enclosure	15mm, 18mm Multilayer Birch Plywood	15mm, 18mm Multilayer Birch Plywood	15mm, 18mm Multilayer Birch Plywood		
Finish	Black Polyurethane Paint	Black Polyurethane Paint	Black Polyurethane Paint		
Grille	Black Steel Mesh + Acoustic Transparent Cloth	Black Steel Mesh + Acoustic Transparent Cloth	Black Steel Mesh + Acoustic Transparent Cloth		
3 Channels Class Amp Module@4 Ω	-	-	HF Channel	LF Channel	SUB Channel
	-	-	1000W	2500W	2500W
THD (1Khz, Full Power 4 Ω)	-	-	1%		
SNR	-	-	102.5dB	103dB	103dB
Active Gain (1KHz, 8 Ω)	-	-	20dB	32dB	32dB
Input	-	-	Neutrik & Male XLR & Female XLR		
Input Impedance	-	-	20K Ω Balanced / 10K Ω Unbalanced		
Input Connection (Full-Range)	-	-	Neutrik NL4MP (LF:1+1- , HF:2+2-)		
Input Connection (Sub)	-	-	Neutrik NL4MP (BASS:1+1-)		
Output Circuit Type	-	-	Class D		
Cooling System	-	-	The airflow direction is from the back to the front		
Voltage Requirements	-	-	200-240V ~ 50-60Hz		



Model No.	YG SUB	YG SUBA	
Frequency Response	30Hz ~ 100Hz (± 3 dB) , 25Hz ~ 120Hz (−10dB)	30Hz ~ 100Hz (± 3 dB) , 25Hz ~ 120Hz (−10dB)	
Sensitivity (@1w / 1m)	101dB	101dB	
Power Rating (AES)	1600W	1600W	
Nominal Impedance	4 Ω		
Maximum SPL	133 dB SPL, 139dB SPL Peak	133 dB SPL, 139dB SPL Peak	
LF Driver	2x18" (100mm Voice Coil) Ferrite	2x18" (100mm Voice Coil) Ferrite	
Dimensions (H x W x D)	740x535x1151 (mm)	740x535x1151 (mm)	
Net Weight	83kg	90kg	
Connection	Neutrik NL4 x 2	XLR+POWERCON+SPEAKON	
Connection Method	LF:1+1−		
Enclosure	15mm, 18mm, 24mm Multilayer Birch Plywood	15mm, 18mm, 24mm Multilayer Birch Plywood	
Finish	Black Polyurethane Paint	Black Polyurethane Paint	
Grille	Black Steel Mesh + Acoustic Transparent Cloth	Black Steel Mesh + Acoustic Transparent Cloth	
2 Channels Class Amp Module@4 Ω	—	SUB Channel 1	SUB Channel 2
	—	2500W	2500W
THD (1Khz, Full Power 4 Ω)	—	1%	
SNR	—	103dB	103dB
Active Gain (1KHz, 8 Ω)	—	32dB	32dB
Input	—	Neutrik & Male XLR & Female XLR	
Input Impedance	—	20K Ω Balanced / 10K Ω Unbalanced	
Input Connection (Full-Range)	—	—	
Input Connection (Sub)	—	Neutrik NL4MP (SUB:1+1−)	
Output Circuit Type	—	Class D	
Cooling System	—	The airflow direction is from the back to the front	
Voltage Requirements	—	200–240V ~ 50–60Hz	



PROFESSIONAL CHOICE EASE FOCUS 3 GLL

EASE Focus 3 is an acoustic modeling software for line array systems and configurable loudspeakers. **YME**SYSTEMS now provides official GLL data of EASE Focus 3 for GT 13, GT 21, YG 75, YG 30, YG 30A and iA 110.

The simulation in 3 dimensions enables an efficient and professional planning of even very complex sound solutions. EASE Focus 3 takes a large step forward towards more realistic modeling of complex sound systems by including many new major features. It can be considered a perfect tool for the FOH engineer, who needs to set up the sound system for a show, as well as for the R&D engineer, who is developing high quality acoustic products.

EASE Focus 3 is the optimal tool for easy and quick prediction of the system performance in a given venue. The download of the EASE FOCUS software and official GLL data for **YME**SYSTEMS is free of charge.

Check this out for more details: focus.afmg.eu/index.php/fc-brands-en.html

PROPOSALS

