



A RESPECT TO ULTIMATELY HONORED SOUND ENGINEERS



GUANGZHOU YME TECHNOLOGIES CO., LTD

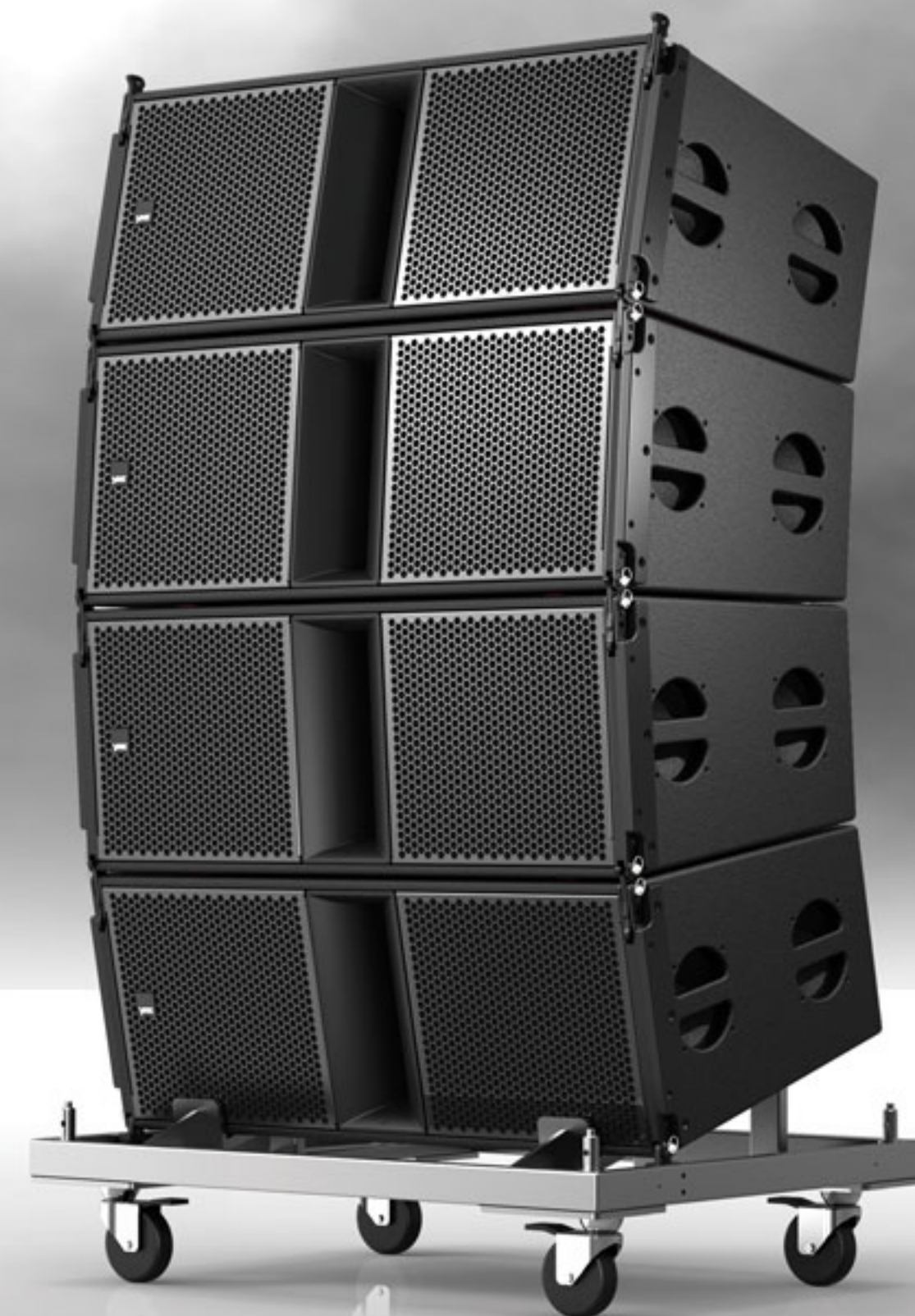
ADD.: 6 Qiheng Road Chenchong Village Shawan Town,
Panyu District, Guangzhou, China

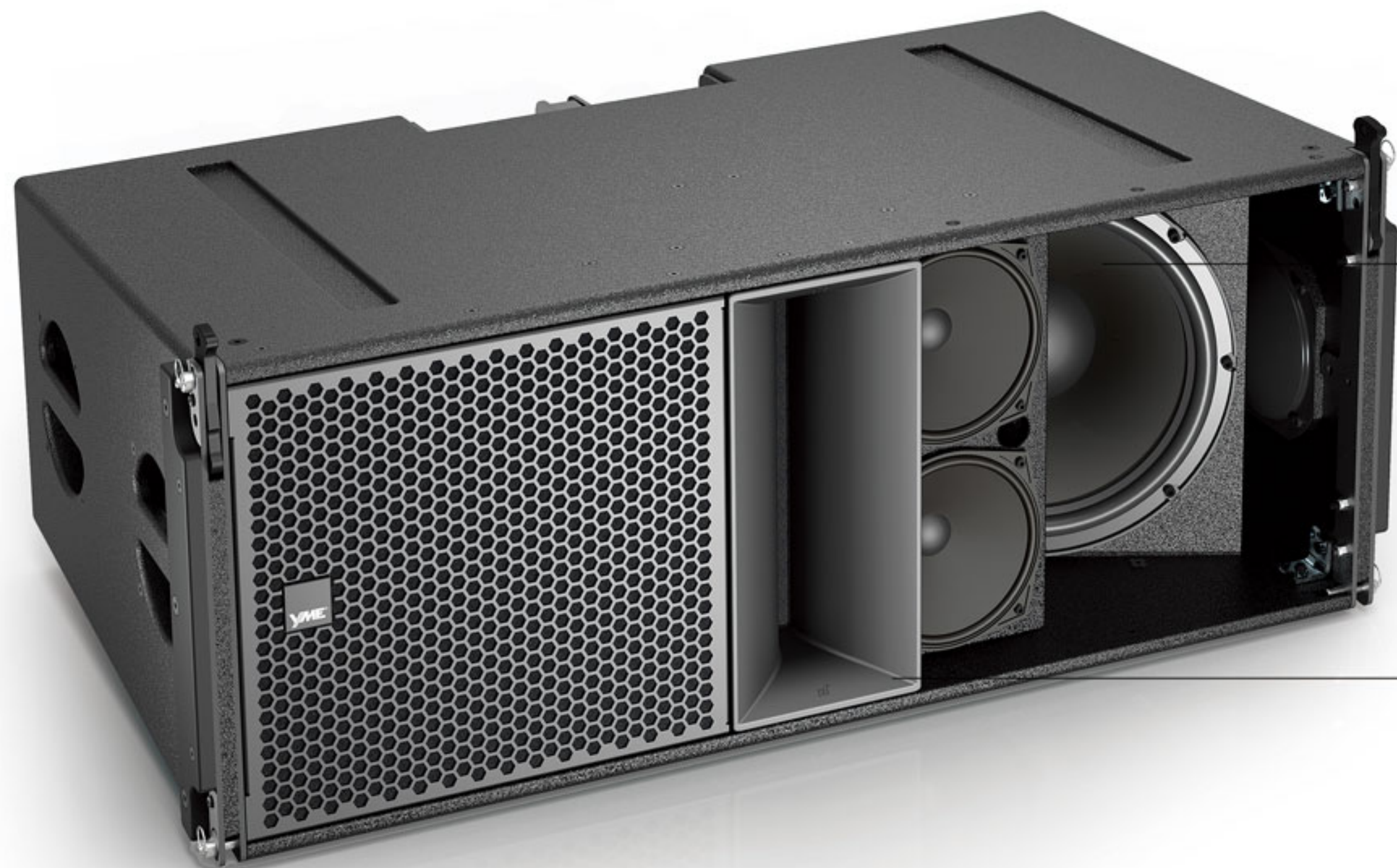
TEL.: +86 20 34838008

FAX: +86 20 34831010

WEBSITE: www.YMESYSTEMS.com

EMAIL: info@YMESYSTEMS.com





Invincible Performance Redefined

With spirit of extraordinary originality, technology, boldness and uncompromising persistence, Putting up with the most cutting-edge technologies in the industry, **YMESYSTEMS** works relentlessly for over 3 years in pursuit of redefining performance.

When you look at it, innovation is our obsession. Every refinement across the entire enclosure results in better performance on the stage which in our philosophy, is measured not by coverage or sound pressure, but by an extension of sound engineer's will and breathtaking beat in audience's heart.

We are here to call it GT 13, the unprecedented dual 13" , 3 way four-channel-amp line array speaker which represents everything that YMESYSTEMS stands for.

Configuration

2x3" tweeter, Neodymium
4x6.5" Mid. Range Driver, Neodymium
2x13 Woofer, Neodymium
80° or 120° (Changeable) Waveguide
Presetttable Rigging System
EASE FOCUS 3 GLL

A Wolf in Sheep's Clothing

Starting with a crazy idea of being like no one, GT 11, the world's first dual 11", 3 way tri-amp line array speaker, which is not a small version of our large system, but has its own unique character and tailored innovation for you and your need.

With the help of advanced mechanic and acoustic design, the loudness and compactness is no more a conflict. 140dB of SPL is hidden behind the incredibly compact enclosure, which makes GT 11 master freely across all kinds of small, medium or big events.

Configuration

2x3" Tweeter, Neodymium
1x8" Mid. Range Driver, Neodymium
2x11" Woofer, Neodymium
80° or 120° (Changeable) Waveguide
Presettable Rigging System
EASE FOCUS 3 GLL





Smart and Presettable Rigging System

A very safe and fast rigging system plays a tremendously important role in a successful sound system. Working along with the authorized EASE FOCUS 3 simulation, the presettable rigging and dolly design integrates a very efficient and safe solution to fly and dismantle our small, medium or big line array systems, which makes our line array systems a real professional choice.

The official GLL data of EASE FOCUS 3 available now for GT, YOGA and iA series.
The rigging system available now for GT and YOGA series only.



A Masterpiece of Stylish Refusal

Following the uneven path of GT 13, GT M is the world's first single 13" professional stage monitor that meets the highest demands from musicians and sound engineers.

The extraordinary and unprecedented 13" size and special formulated carbon fiber cone provides faster and deeper response in low frequency. The high quality 3" neodymium tweeter is coaxially placed on the woofer. By avoiding interfere between tweeter and woofer, the coaxial structure design helps to produce amazing brightness and clarity for mid-high frequency.

Configuration

1x3" Tweeter, Neodymium
1x13" Woofer, Neodymium
60° x 60° Conical Horn
Biamp/Fullrange Switchable





Conquer and Constantly Reclaim Your Bass

To allow boldness, clarity and standard of excellence flourishing here, GT 21, the dual 21" infra sub-woofer speaker was born as the perfect supplement of low frequency of GT line array systems.

With amazing peak of SPL 146.6dB output, the energy and power of the low frequency is still perceptible even at a great distance, GT 21 is the perfect choice for mega touring, rental use and for any application that needs a truly massive bass foundation.

Configuration

2x21" Woofer, Neodymium
EASE FOCUS 3 GLL

Simply Plug & Play, Simply the Best

YG MA is the world's first single 13" , 2 way biamp active stage monitor which derives from the successful coaxial structure of GT M.

Thanks to the dual channels amplifier module with analog circuit technologies (2X700W@4Ω) and many useful features, YG MA has become a truly plug & play solution, not only as professional stage monitor, but also as small PA.

Configuration

1x2.4" Tweeter, Neodymium
1x13" Woofer, Neodymium
80° x 80° Conical Horn
2 Way Biamp
Monitor/PA Presets
110V/220V Switchable
2xCombo Input





GT
Performance



GT 11

Is there any line array system in the market which is able to handle not only mega outdoor performance where needs high and continuous SPL output but also small-medium indoor places where needs extra convenience in trucking and operation? GT 11, the world first dual 11" 3 way triamp line array system gives a very positive answer. With 140dB max SPL output, GT 11 is pleased to handle mega performance. Meanwhile, the extremely compact and light enclosure (H:335×W:780×D:500 mm, 44kg), GT 11 offers superb convenience in trucking and operation.

The challenge of designing GT 11 is how to maintain excellent acoustics performance while putting 5 pcs speakers along with wave guide inside the amazingly compact enclosure.

GT 11 utilizes all neodymium drivers, which ensure high sensitivity, compact size and less weight. Up to 112dB sensitivity delivered by two 3" compression tweeters with 75mm titanium voice coil loaded in an integrated waveguide which meets all physics criteria of wave sculpture technology. 105dB sensitivity produced by a 8" 50mm mid range drivers placed behind waveguide coaxially. The upper frequency limit of mid-range drivers is up to 8KHz ensures high resolution for mid-hi frequency range, the lower frequency can reach down to 200Hz. Two 11" woofers placed as V shape side by side with the mid-range. The special formulated carborn fiber cone gives ultra strengthness and lightness to mi-low frequency. The low frequency can be reached down to 60Hz, which makes GT 11 perfectly working with YG SUB.

Precision-made 18 mm birch plywood enclosure with a durable polyurea paint finishing. The availability of EASE FOCUS 3 GLL works together with smart & presettable rigging system, the extraordinary GT 11 is the perfect choice which fits for all kind of touring applications.



GT 13

Large format line array sometimes needs to cover up to 100 meters distance. Due to air temperature and humidity changes, mid-hi frequency can be absorbed up to 10-20dB, less headroom of mid-hi frequency can not be able to supply the reduction in far field. The challenge of designing the world first dual 13", 3 way 4-chn-amp line array system is how to maintain excellent acoustics while putting 8 pcs speakers along with wave guide inside the limited space of an enclosure.

GT 13 utilizes all neodymium drivers, which ensures high sensitivity, compact size and less weight. Up to 112dB sensitivity delivered by two 3" compression tweeters with 75mm titanium voice coil loaded in an integrated waveguide which meets all physics criteria of wave sculpture technology.

108dB sensitivity produced by four front-loaded 6.5" mid-range drivers, which are able to couple mid range smoothly and completely, no extra adjustment from EQ even needed. The upper frequency limit of mid-range drivers is up to 8KHz ensures high resolution for mid-hi frequency range, the lower frequency can reach down to 250Hz.

Two 13" woofers placed as V shape side by side with the mid-range. The special formulated carborn fiber cone gives ultra strengthness and lightness to mi-low frequency. Without taking care of the frequency upper than 250Hz as 4 pieces mid range drivers have done perfectly, the low frequency can be reached down to 40Hz, which makes GT 13 is truly able to reproduce full range frequency and work with GT 21 infra subwoofer perfectly. By the way, the low frequency of typical dual 12" line array speakers in the market can normally go down to 50-70Hz only.

Precision-made 18 mm birch plywood enclosure with a durable polyurea paint finishing. The availability of EASE FOCUS 3 GLL works together with smart & presettable rigging system, the extraordinary GT 13 is the perfect choice for mega touring application where needs astonishing acoustic performance.



GT 21

GT 21 is the dual 21" infra subwoofer which is the biggest onw unprecedentedly from YMESYSTEMS. In pursuit of perfect performance, GT 21 has made no compromise utilizing the highest standard component and materials. The two extremely powerful 21" neodymium driver with 135mm, 5.3" voice coil is custom-made with extreme low frequency range of 28Hz ~ 200Hz (-10dB) with amazing peak of SPL 146.6dB.

Thanks to the hybrid design and precision-made of 24mm birch plywood, the enclosure helps maximizing the efficiency of GT 21. As a result, the energy and power of the low frequency is still perceptible even at a great distance.

With up to 8 large handles around the enclosure and 4 wheels in rear side, GT 21 is convenient in operation and transportation. It's the perfect choice for mega touring, rental use and for any application that needs a truly massive bass foundation.



GT M

Musicians and performers always want their voices to be heard strongly and clearly among loudness that produced by main PA system. Moreover, sound engineers always want monitor speaker that powerful but simple for use and no feedback of course.

Meeting the demands, GT M, the world first single 13" pro stage monitor was born. Rather than typical 12" and 15" drivers, the extraordinary 13" size and special formulated carbon fiber cone provides faster and deeper response in low frequency. The high quality 3" neodymium tweeter that coaxially placed on the woofer. By avoiding interfere between tweeter and woofer, the coaxial structure design helps to produce amazing brightness and clarity for high frequency.

The crossover can be switchable between full range mode and biamp mode. For easier cabling on the stage, GT M has NL 4 connectors in both sides of the enclosure. GT M also can be used as small PA system with pole-mount design.



YG MA

YG MA is the world first single 13" ,2 way biamp active stage monitor.

Rather than typical 12" and 15" drivers, the extraordinary 13" size and special formulated carbon fiber cone provides faster and deeper response in low frequency. The high quality 2.4" neodymium tweeter that coaxially placed on the woofer. By avoiding interfere between tweeter and woofer, the coaxial structure design helps to produce amazing brightness and clarity for high frequency.

Thanks the dual channels analogue amplifier module (2X700W@4Ω) and below useful features, which makes YG MA as a truly plug & play monitor and small PA solution:

By offering built-in Monitor/PA switchable presets. Hi frequency output can be increased when PA mode is selected, Pole-mount design is convenient for small PA use;

The combo Audio In and Mic In is convenient for different program sources;

The ground switch effectively avoids the noise caused by the ground loop;

20 dB for high level input signals will be attenuated when PAD gain attenuation switch is on;

110V/220V switcher adapts voltage standard from different countries.



Model No.	GT 11	GT 13	GT 21
Frequency Response	60 Hz ~ 16KHz (±3dB) , 50 Hz ~ 20KHz (~10dB)	50 Hz ~ 16KHz (+3 dB) , 40 Hz ~ 18KHz (~10dB)	32Hz ~ 150Hz (±3 dB),28Hz ~ 200Hz (~10dB)
Nominal Dispersion(−6dB)	H: 80° or 120° (changeable); V: 10° (adjustable)	H: 80° or 120° (changeable); V: 8° (adjustable)	–
Sensitivity(@1w/1m)	Hi:112dB, Mid:105dB, Low:97dB	Hi:112dB, Mid:105dB, Low(L):102dB, Low(R):102dB	105dB
Power Handling(AES)	Hi:160W, Mid:150W, Low:800W	Hi:160W, Mid:600W, Low(L):500W, Low(R):500W	3600W
Impedance	Hi:16 Ω , Mid:16 Ω , Low:12 Ω	Hi:16 Ω , Mid:16 Ω , Low(L):12 Ω , Low(R):12 Ω	4 Ω
Max. SPL	Hi:134dB, 140dB peak	Hi:134dB, 140dB Peak	140.6dB, 146.6dB Peak
	Mid:127dB, 133dB peak	Mid:133dB, 139dB Peak	–
	Low:126dB, 132dB peak	Low(L):129dB, 135dB Peak	–
	–	Low(R):129dB, 135dB Peak	–
Drivers	Hi:2 × 3" (1.4" exit,75mm voice coil, neodymium)	Hi:2 × 3" (1.5" exit, 75mm voice coil, neodymium)	2 × 21" (135mm voice voil , neodymium)
	Mid: 1 × 8" (50mm voice coil, neodymium)	Mid: 4 × 6.5" (50mm voice coil neodymium)	–
	Low: 2 × 11" (75mm voice coil, neodymium)	Low: 2 × 13" (75mm voice coil neodymium)	–
Dimension (HXWXD)	335 × 780 × 500(mm)	430 × 1130 × 620(mm)	607 × 1415 × 900(mm)/castor 1040(mm)
Net Weight	44Kg	77Kg	141Kg
Rigging/Mount	3 points, 0° to 10° adjustable	3 points, 0° to 8° adjustable	–
Connector	WP8 × 2	WP8 × 2	NL4MP × 3
Connection	Low:1–2+, Mid:3–4+, Hi:5–6+	Low(L):1+1–, Low(R):2+2–, Mid:3+3–, Hi:4+4–	1+1–
Enclosure	18mm first garde birch plywood	18mm first garde birch plywood	24mm first garde birch plywood
Finishing	Polyurea paint	Polyurea paint	Polyurea paint
Mesh	2mm mesh with acoustic foam	2mm mesh with acoustic foam	2mm mesh with acoustic foam
2 Chn Swtiching Power Amp Module@4 Ω	–	–	–
	–	–	–
THD(1KHz,Full Power 4 Ω)	–	–	–
SNR	–	–	–
Active Gain(1Khz,8 Ω)	–	–	–
Input	–	–	–
Input Impedance	–	–	–
Voltage Requirements	–	–	–



Model No.	GT M	YG MA	–
Frequency Response	60Hz ~ 18KHz (±3 dB),45Hz ~ 20KHz (~10dB)	50Hz ~ 18KHz (±3 dB),40Hz ~ 20KHz (~10dB)	–
Nominal Dispersion(−6dB)	60° × 60°	–	–
Sensitivity(@1w/1m)	Hi:110dB,Low:100dB(biamp);98dB(fullrange)	80° × 80°	–
Power Handling(AES)	Hi:80W, Low:500W	Hi:70W, Low:450W	–
Impedance	Hi:8 Ω ,Low:8 Ω	Hi:8 Ω ,Low:4 Ω	–
Max. SPL	Hi:129dB, 135dB peak(biamp)	124dB, 130dB Peak	–
	Low:127dB, 133dB peak(biamp)	–	–
	125dB , 131dB peak(fullrange)	–	–
	–	–	–
Drivers	Hi:1 × 3" (1.4" exit,75mm, voice coil, neodymium)	Hi:1 × 2.4" (1.4" exit, 62mm voice coil neodymium)	–
	Low: 1 × 13" (75mm, voice coil, neodymium)	Low: 1 × 13" (75mm voice coil, neodymium)	–
	–	–	–
Dimension (HXWXD)	380.3 × 555 × 546.3(mm)	330.9 × 555 × 523.1(mm)	–
Net Weight	28Kg	32Kg	–
Rigging/Mount	M8 × 6, + pole socket	M8 × 6, +pole socket	–
Connector	NL4MP × 3	NEUTRIK NAC3FCA+XLR	–
Connection	Biamp:low 1+1–,hi 2+2–;full range: 1+1–	–	–
Enclosure	15mm first grade birch plywood	15mm birch plywood	–
Finishing	Polyurea paint	Polyurea paint	–
Mesh	2mm mesh with acoustic foam	2mm mesh with acoustic foam	–
2 Chn Swtiching Power Amp Module@4 Ω	–	Hi Channel	Low Channel
	–	700W	700W
THD(1KHz,Full Power 4 Ω)	–	<1%	
SNR	–	102.5dB	103dB
Active Gain(1Khz,8 Ω)	–	20dB	32dB
Input	–	2xCombo	
Input Impedance	–	20K Ω balanced / 10K Ω unbalanced	
Voltage Requirements	–	110V/220V switchable ~ 50–60Hz	